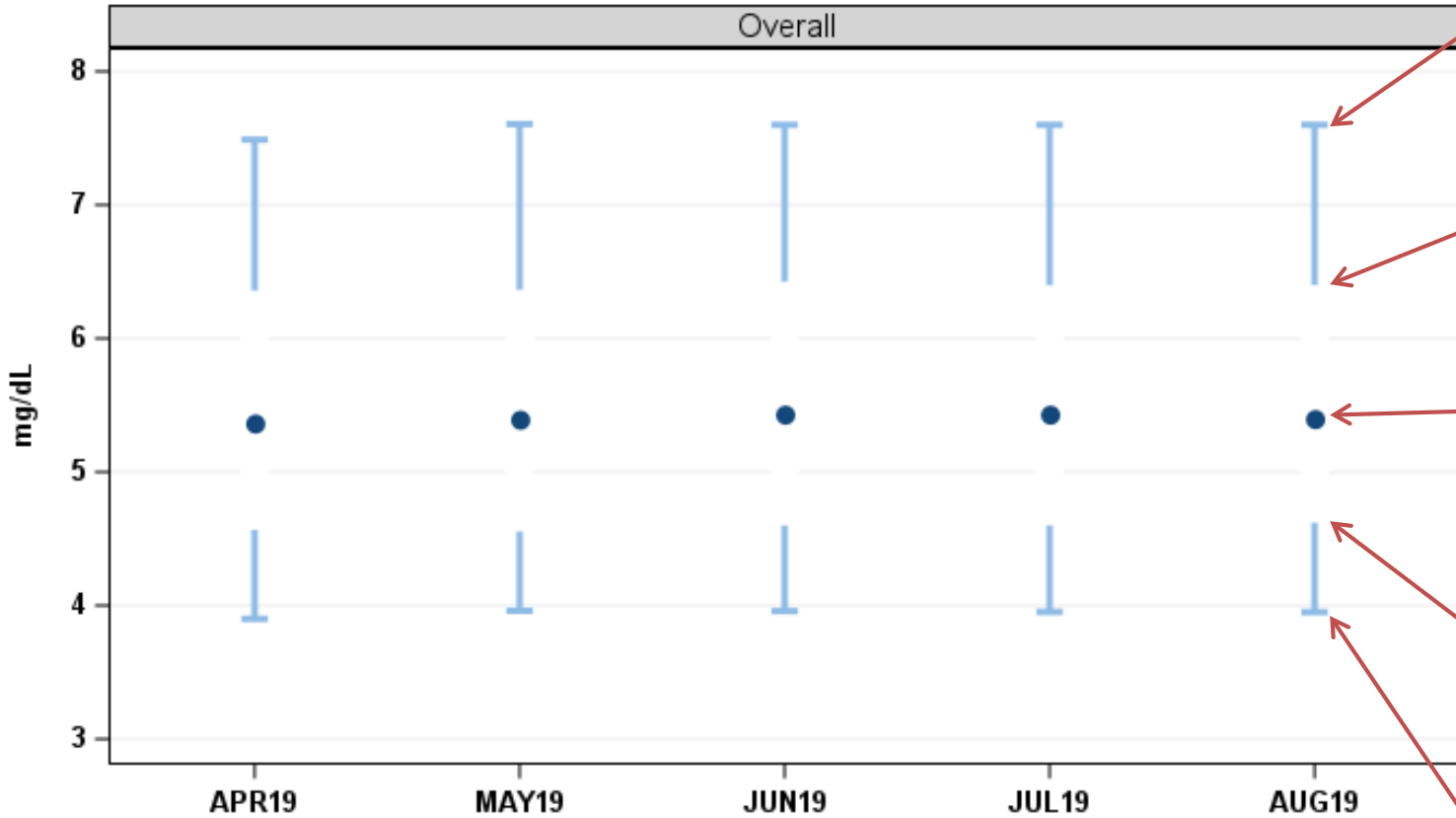


Boxplot Figure

Serum phosphorus, continuous



In August 2019, approximately 90% of patients had serum P <7.6 mg/dL

In August 2019, approximately 75% of patients had serum P <6.4 mg/dL

In August 2019, approximately 50% of patients had serum P <5.4 mg/dL

In August 2019, approximately 25% of patients had serum P <4.6 mg/dL

In August 2019, approximately 10% of patients had serum P <3.9 mg/dL

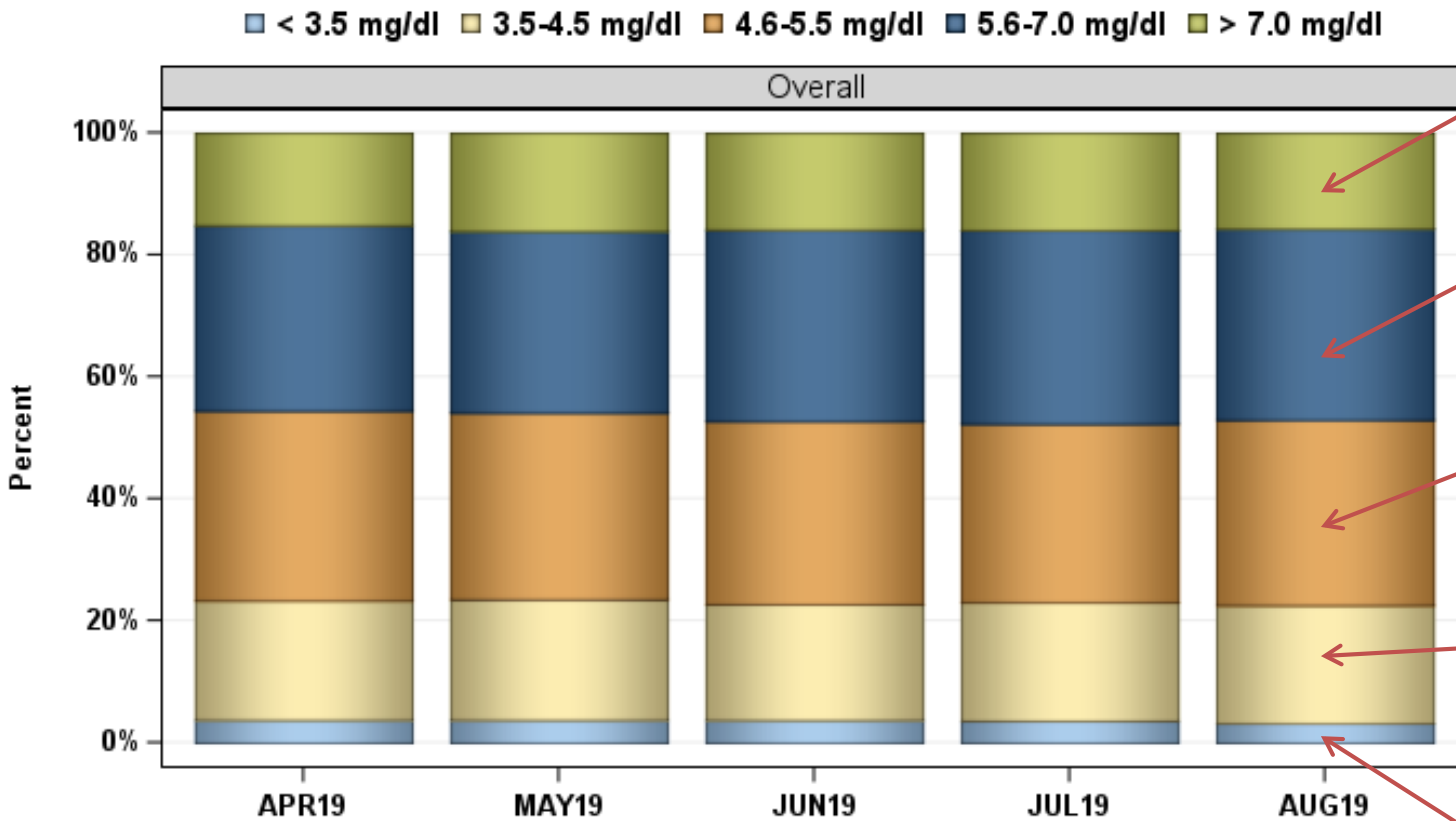
Values at each month are based on the average of at least two measurements obtained within the prior 3 months

Source: US-PDOPPS Practice Monitor, June 2021; <http://www.dopps.org/PDPM>

The trend in serum P categories over time is shown on the X-axis.

Stacked Bar Figure

Serum phosphorus, categories



In August 2019, approximately 16% of patients had serum P >7.0 mg/dL

In August 2019, approximately 31% of patients had serum P 5.6-7.0 mg/dL

In August 2019, approximately 30% of patients had serum P 4.6-5.5 mg/dL

In August 2019, approximately 19% of patients had serum P 3.5-4.5 mg/dL

In August 2019, approximately 3% of patients had serum P <3.5 mg/dL

Values at each month are based on the average of at least two measurements obtained within the prior 3 months

Source: US-PDOPPS Practice Monitor, June 2021; <http://www.dopps.org/PDPM>

The trend in serum P categories over time is shown on the X-axis.