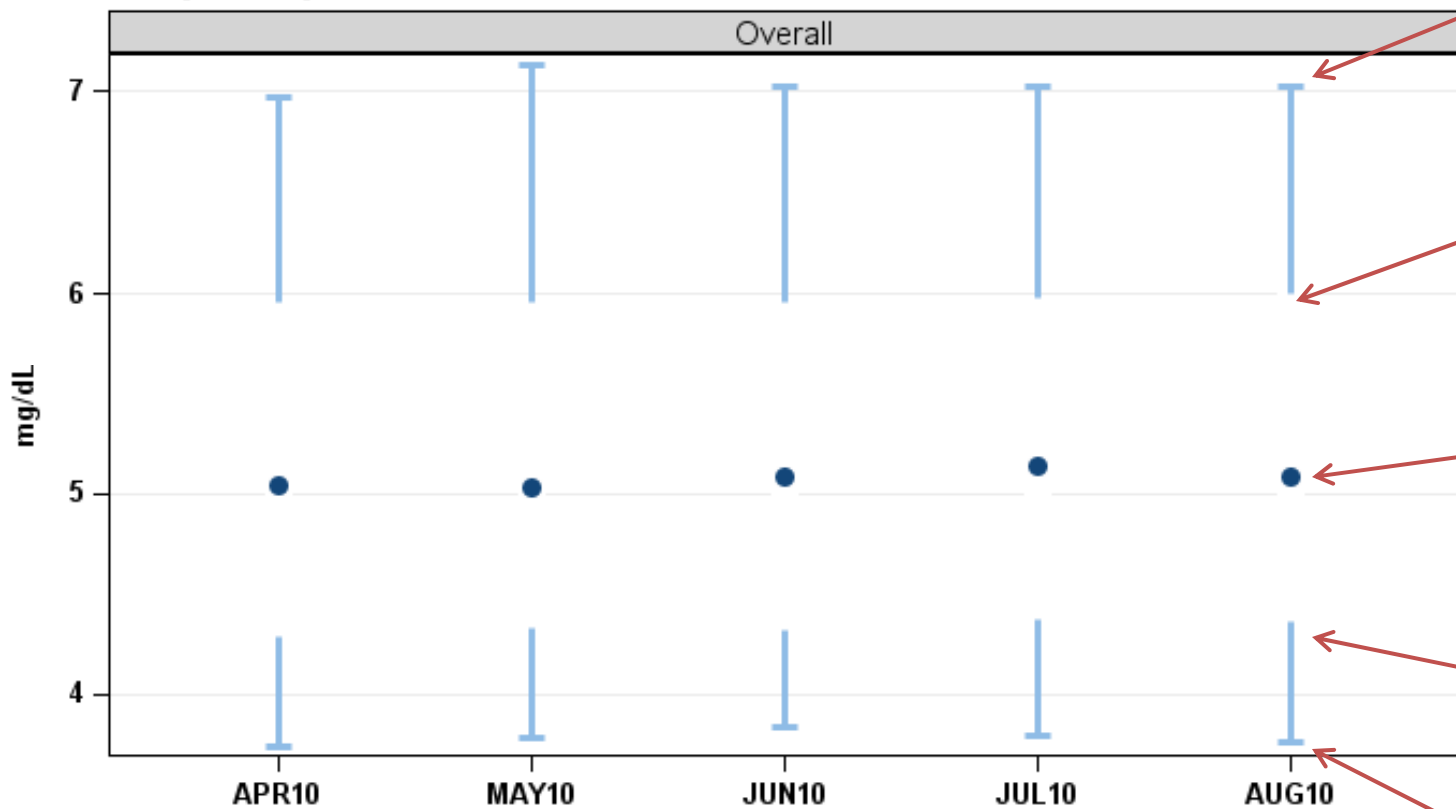


## Boxplot Figure

### Serum phosphorous, continuous



Values at each month are based on the average of at least two measurements obtained within the prior 3 months

Source: DOPPS Practice Monitor, December 2010

In August 2010, approximately 90% of patients had serum P <7.0 mg/dL

In August 2010, approximately 75% of patients had serum P <6.0 mg/dL

In August 2010, approximately 50% of patients had serum P <5.1 mg/dL

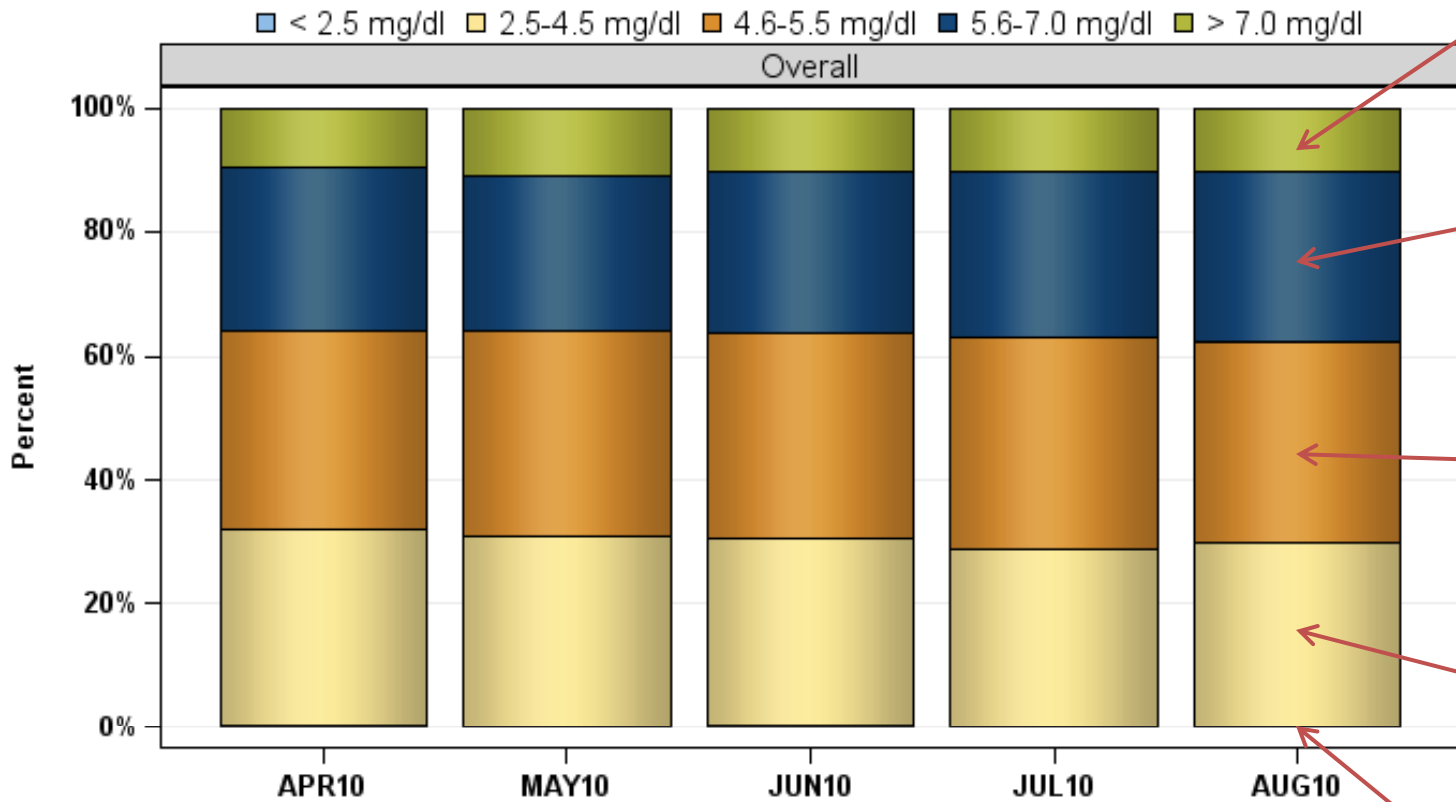
In August 2010, approximately 25% of patients had serum P <4.4 mg/dL

In August 2010, approximately 10% of patients had serum P <3.8 mg/dL

The trend in serum P categories over time is shown on the X-axis.

**Stacked Bar Figure**

**Serum phosphorus, categories**



Values at each month are based on the average of at least two measurements obtained within the prior 3 months

Source: DOPPS Practice Monitor, December 2010

In August 2010, approximately 10% of patients had serum P >7.0 mg/dL

In August 2010, approximately 27% of patients had serum P 5.6-7.0 mg/dL

In August 2010, approximately 32% of patients had serum P 4.6-5.5 mg/dL

In August 2010, approximately 30% of patients had serum P 2.5-4.5 mg/dL

In August 2010, approximately 0.1% of patients had serum P <2.5 mg/dL

The trend in serum P categories over time is shown on the X-axis.

## DPM Geographic Regions

